

HISTORY

In 1955, the Iowa legislature passed a law permitting individual counties to establish County Conservation Board for the purpose of acquiring and developing lands for parks, hunting, fishing, recreation and other conservation purposes within the county. The Worth County Conservation Board was authorized by a vote of the people at the Primary Election of 1958. Board members are appointed for five-year terms by the Board of Supervisors. These board members serve without pay.

On August 26, 1958 the Worth County Conservation Board held its first monthly meeting. The Board meets on the first Thursday of every month at 7 PM at the conservation board office. The meetings are open to the public. The office is located at 503 1st Ave N in Northwood. The phone number is 641-324-1524 and e-mail address is wccb@worthcounty.org.



Shelter at Kuennens Quarry

Rules and Regulations

A copy of our rules and regulation may be obtained at the conservation board office or on the county website at www.worthcounty.org.

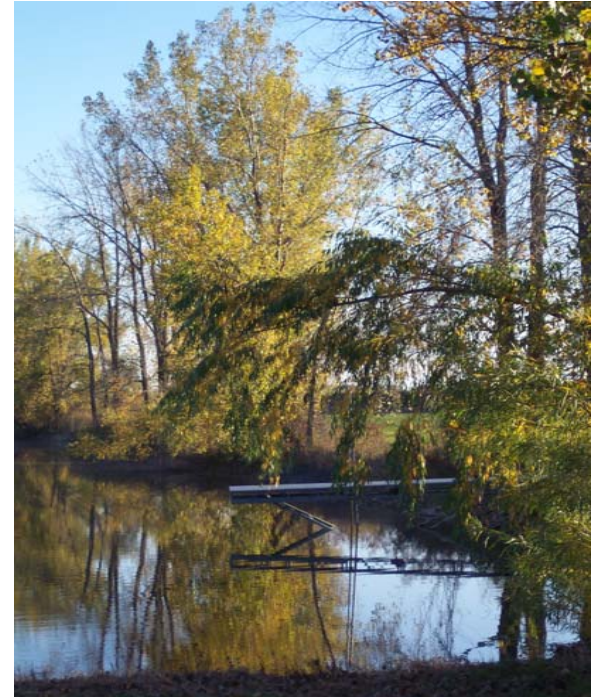
Parks

The following areas are listed and the number will reference its location on the county map. Camping is only allowed in Ochee Yahola and Silver Lake Park.

1. Ochee Yahola Park- 160 acres. Upland timber with a small marsh and 23 acres of restored native grasses. Park is open to firearm hunting after November 1 to the close of the hunting seasons. Spring turkey hunting is archery only. Camping with electrical hookups, no water or sewer. Picnic and shelter facilities. Hiking trails.
2. Silver Lake Park- 28.7 acres. Located on the North shore of Silver Lake. Park offers picnic and shelter facilities. Camping with electrical hookup, no water or sewer. No playground.
3. Silver Lake Access- 4 acres. On the south side of the lake. Boat ramp and courtesy dock are handicap accessible. Pit toilet.
4. Worth County Lake- 28 acres. Five acre lake stocked with fish. No boat access. Shelter, picnic and playground facilities. Adjoins Turkeyfoot Prairie.
5. Deer Creek Rest Area- 31 acres. Two acre picnic area with pit toilet. 29 acres of timber that is open to hunting.
6. Kuennens's Quarry- 58 acres. Old limestone quarry, stocked with fish (trout in the winter). Picnic shelters and a four season shelter house (rental only) and a large covered grill.

Shelter Rentals

Ochee Yahola, Worth County Lake and Silver Lake Park have open shelter houses. These shelters have electrical power. They may be reserved for a \$10 fee. Please call our office (641-324-1524) to make a reservation. Dates already taken can be seen on the county website at www.worthcounty.org. The shelters are first come use unless there is a reservation sign posted. Kuennens's Quarry shelter is a log cabin that has both heat and air conditioning, flush toilet, running water and a refrigerator. The cabin is available by rental only, the fee is \$70. Kuennens's Quarry and Worth County Lake have large covered grills suitable for group use. A special use permit is available to extend the closing hours.



Kuennens Quarry

Wildlife Areas

7. Christianson-Taylor WMA—262 A. Marsh and uplands.
8. Stimes Woods—165 A. Oak timber with some upland and wetlands.
9. Turvols Wood—40 A. Oak timber.
10. Sydney Swensrud Area—43 A. River access, riparian habitat, restored native grass upland.
11. Brunsvold Haugen timber—19 A. Oak timber
12. Myre Timber—3 A. Aspen/cottonwood timber.
13. Sawin WMA—23 A. Upland with winter cover plantings.
14. Deer Creek Game Area—40 A. Mixed woodland along the Deer Creek drainage ditch.
15. Deer Creek Forest—45 A. Mixed woodland along the Deer Creek drainage ditch. Food plot.
16. Silver Lake Wildlife Area—20 A. Oak timber with a prairie pothole.
17. Story WMA— 4 A. River access only.
18. Blair Creek WMA—3 A. Native grass planting with shelter belt.
restored wetland



Habitat at Land of Two Waters



New Fishing Jetty at Silver Lake (funded with fish habitat stamp monies)

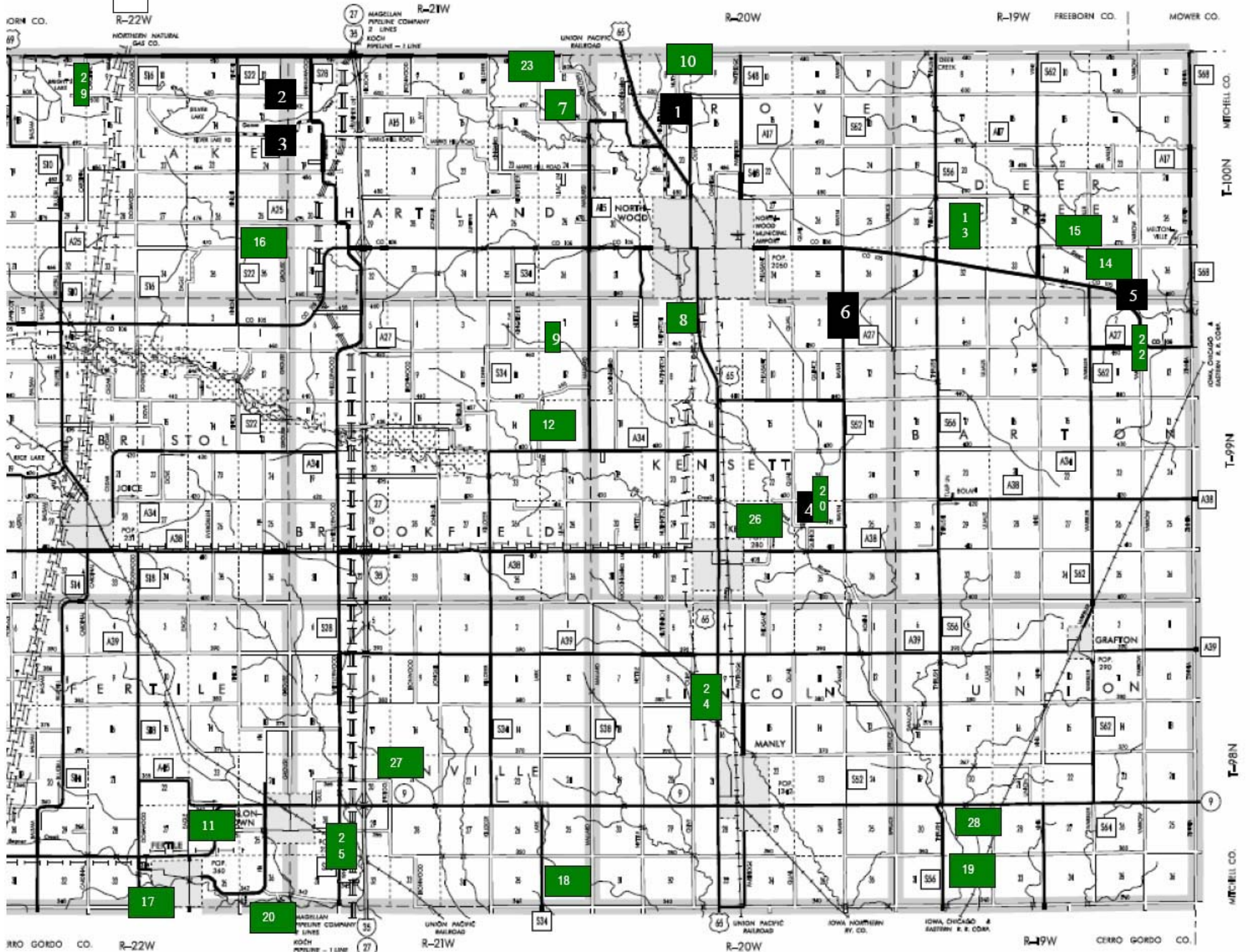
19. Plymouth Pit—33 A. Old sand pit seeded to native grasses with mixed woodland/ scrub brush.
20. Turkeyfoot Prairie—137 A. Upland habitat with sedge meadow, two wetlands, food plot and winter cover plantings.
21. Wally's Woods—73 A. River bottom timber with food plot and some upland.
22. Hanson's Corner—4 A. Old road right of way with some native plants.
23. Panicum Prairie—315 A. Native grass, seasonal wetlands, food plots and brushy areas.
24. **Tosenson Wildlife Refuge**—3A. Tree planting. **NO HUNTING.**
25. Willow Creek WMA—355 A. Upland habitat with seasonal wetlands.
26. Land of Two Waters—260 A. Upland habitat with three restored wetlands, food plots and winter cover plantings.
27. Harrier Wetlands—130 A. Upland habitat with restored wetlands.

28. Shellrock WMA— 126 A. Upland habitat with an oxbow wetland, food plots and winter cover plantings.
29. Northern Prairie WMA—40 A. Restored wetland with some upland.

Many of our wildlife areas have been purchased with the help of partners, like Pheasants Forever and the Iowa Natural Heritage Foundation. Funds from the habitat stamp grant program were used in almost all recent acquisitions.



Christianson-Taylor WMA



TRUMPETER SWAN RESTORATION PROJECT



There are two pair of trumpeter swans at Worth County Lake as part of the restoration project. The young are banded and neck collared each year. This allows the birds to be identified during migration and dispersal to new areas.



HUNTER SAFETY CLASS

